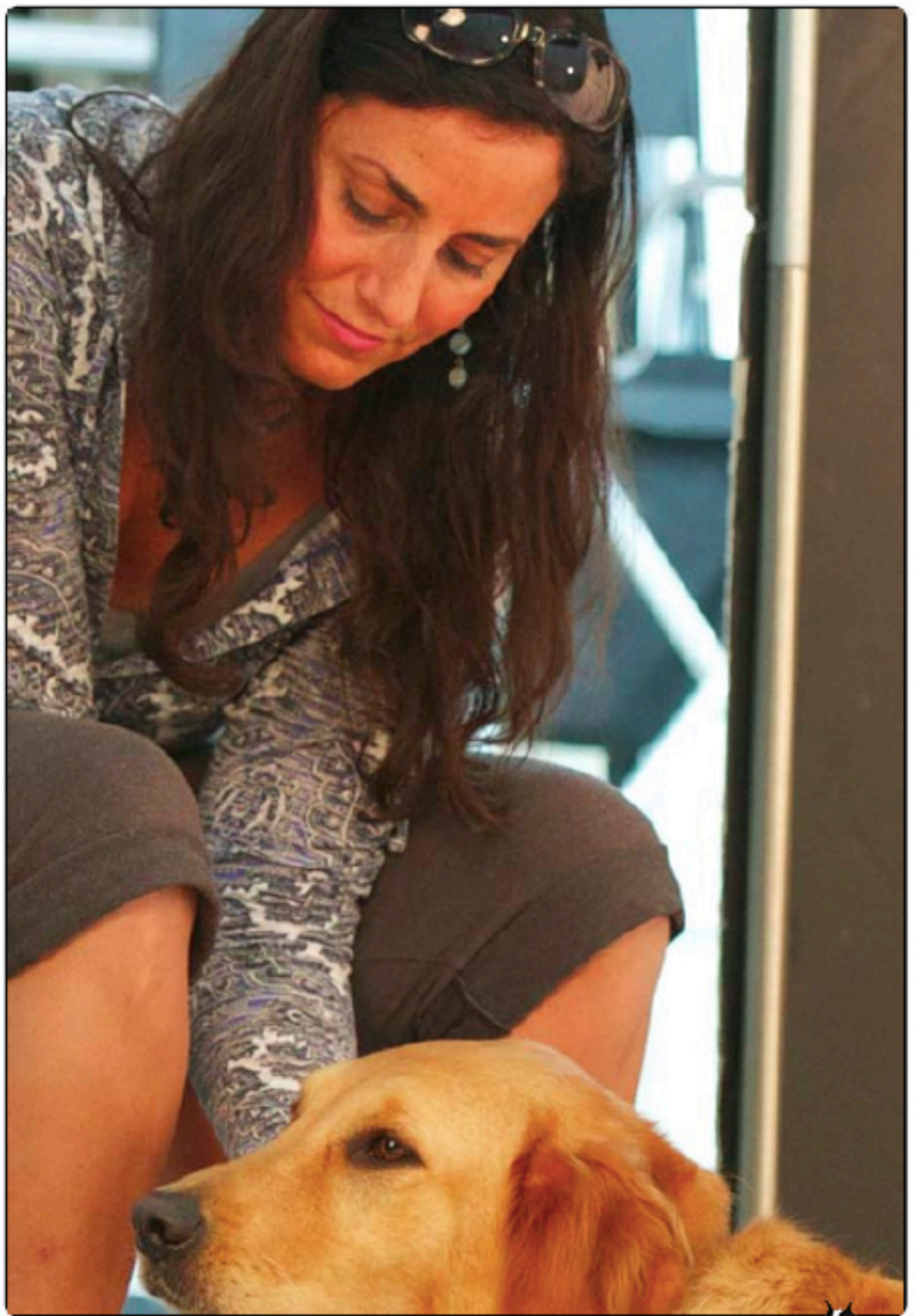


Brand Packaging Photo Shoot



Pet Handling

Our "Pet Whisperer" was Jaimee Kelsey, also from DogGone Smart. Without Jaimee this shoot might not have been successful. I'm not really sure how she does it, but she gets inside the head of any pet we put in front of her. She instinctively knows when to push the pet to perform and when the pet needs a break. Not only did Jaimee need to be on set while we were shooting, she had the difficult task of soothing the next pet in preparation for their time in front of the camera. Imagine having to try to get a cat to settle down when it is surrounded by dogs! I have worked with Jaimee on several shoots and she is amazing.



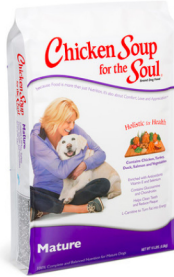
Talkingbox DMG, Inc.



DOG GONE
SMART



CANINE CENTER



Chicken Soup for the Soul